

5

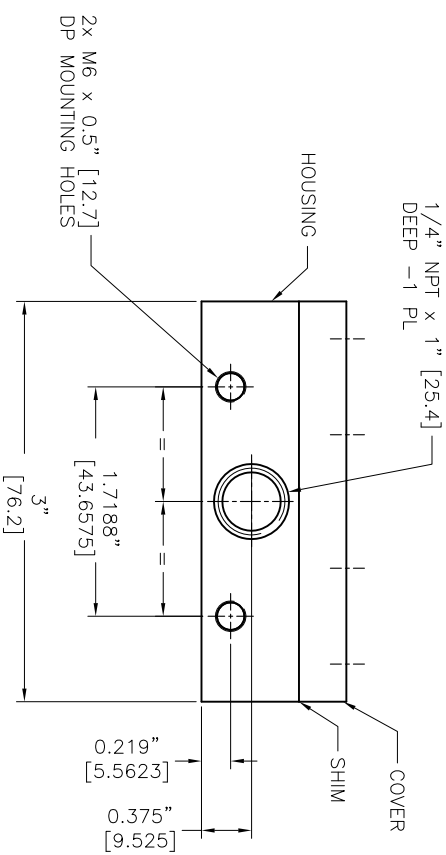
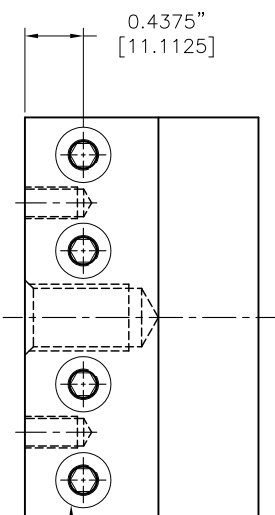
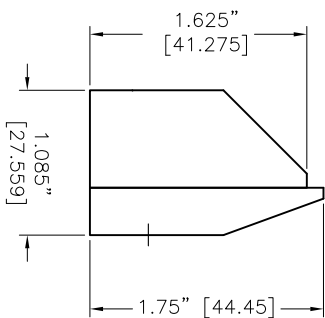
4

3

2

1

- NOTES:
- 1 ALL DIMENSIONS SHOWN ARE FINISH OPERATIONAL DIMENSIONS WHICH INCLUDE RESIDUAL COATINGS UNLESS OTHERWISE SPECIFIED.
 - 2 PART TO BE PACKED PROPERLY TO AVOID ANY DAMAGE WHILE SHIPPING & HANDLING.
 - 3 ALL HORIZONTAL DIMENSIONS ARE SYMMETRICAL ABOUT CENTER LINE UNLESS OTHERWISE SPECIFIED.



THIRD ANGLE PROJECTION

MATERIAL
ALUMINIUM

FINISH
-

REQUIREMENTS-UNLESS OTHERWISE SPECIFIED		GENERAL		CONTRACT NUMBER -		CLIENT		DATE		TITLE	
GENERAL		DRAWING		CONTRACTOR		STEP/HILL		DATE		NEX FLOW AIR PRODUCTS CORP.	
1. DIMS ARE IN INCHES (MM)	1. DIMS ARE IN INCHES (MM)	1. DIMS ARE IN INCHES (MM)	27/11/2013	-	-	10520 YONCE STREET, UNIT 358-220, RICHMOND HILL, ON L4C 3C7	3" X-STREAM AIR BLADE AIR KNIFE		TEL: (416) 410-1313 & FAX: (416) 410-1806 WWW.NEX-FLOW.COM		
2. DIMENSIONING AND TOLERANCING IN ACCORDANCE WITH ASME Y14.5 (1995)	2. DIMENSIONING AND TOLERANCING IN ACCORDANCE WITH ASME Y14.5 (1995)	2. DIMENSIONING AND TOLERANCING IN ACCORDANCE WITH ASME Y14.5 (1995)	ASHISH	-	-		OUTLINE DRAWING OF				
3. HORIZONTAL DIMS TO MICRO INCH UNLESS OTHERWISE SPECIFIED	3. HORIZONTAL DIMS TO MICRO INCH UNLESS OTHERWISE SPECIFIED	3. HORIZONTAL DIMS TO MICRO INCH UNLESS OTHERWISE SPECIFIED	CA	-	-		3" X-STREAM AIR BLADE AIR KNIFE				
4. BREAK SHARP CORNERS .005 TO .015 UNLESS OTHERWISE SPECIFIED	4. BREAK SHARP CORNERS .005 TO .015 UNLESS OTHERWISE SPECIFIED	4. BREAK SHARP CORNERS .005 TO .015 UNLESS OTHERWISE SPECIFIED	CA	-	-		3" X-STREAM AIR BLADE AIR KNIFE				
1. LINEAR DIMS ±.005 ±.010 ±.015		1. LINEAR DIMS ±.005 ±.010 ±.015		1. LINEAR DIMS ±.005 ±.010 ±.015		1. LINEAR DIMS ±.005 ±.010 ±.015		1. LINEAR DIMS ±.005 ±.010 ±.015		1. LINEAR DIMS ±.005 ±.010 ±.015	
2. ANGLES = ±.010		2. ANGLES = ±.010		2. ANGLES = ±.010		2. ANGLES = ±.010		2. ANGLES = ±.010		2. ANGLES = ±.010	
3. RADIUS = ±.010		3. RADIUS = ±.010		3. RADIUS = ±.010		3. RADIUS = ±.010		3. RADIUS = ±.010		3. RADIUS = ±.010	
4. HOLES IN ACCORDANCE WITH AND 10287		4. HOLES IN ACCORDANCE WITH AND 10287		4. HOLES IN ACCORDANCE WITH AND 10287		4. HOLES IN ACCORDANCE WITH AND 10287		4. HOLES IN ACCORDANCE WITH AND 10287		4. HOLES IN ACCORDANCE WITH AND 10287	
STRESS	STRESS	STRESS	STRESS	STRESS	STRESS	STRESS	STRESS	STRESS	STRESS	STRESS	STRESS
THERMAL	THERMAL	THERMAL	THERMAL	THERMAL	THERMAL	THERMAL	THERMAL	THERMAL	THERMAL	THERMAL	THERMAL
ELECTRICAL	ELECTRICAL	ELECTRICAL	ELECTRICAL	ELECTRICAL	ELECTRICAL	ELECTRICAL	ELECTRICAL	ELECTRICAL	ELECTRICAL	ELECTRICAL	ELECTRICAL
SCALE	SCALE	SCALE	SCALE	SCALE	SCALE	SCALE	SCALE	SCALE	SCALE	SCALE	SCALE
1:1	1:1	1:1	1:1	1:1	1:1	1:1	1:1	1:1	1:1	1:1	1:1
CAD NO	CAD NO	CAD NO	CAD NO	CAD NO	CAD NO	CAD NO	CAD NO	CAD NO	CAD NO	CAD NO	CAD NO
10003X	10003X	10003X	10003X	10003X	10003X	10003X	10003X	10003X	10003X	10003X	10003X
REV	REV	REV	REV	REV	REV	REV	REV	REV	REV	REV	REV
1	1	1	1	1	1	1	1	1	1	1	1

5

4

3

2

1