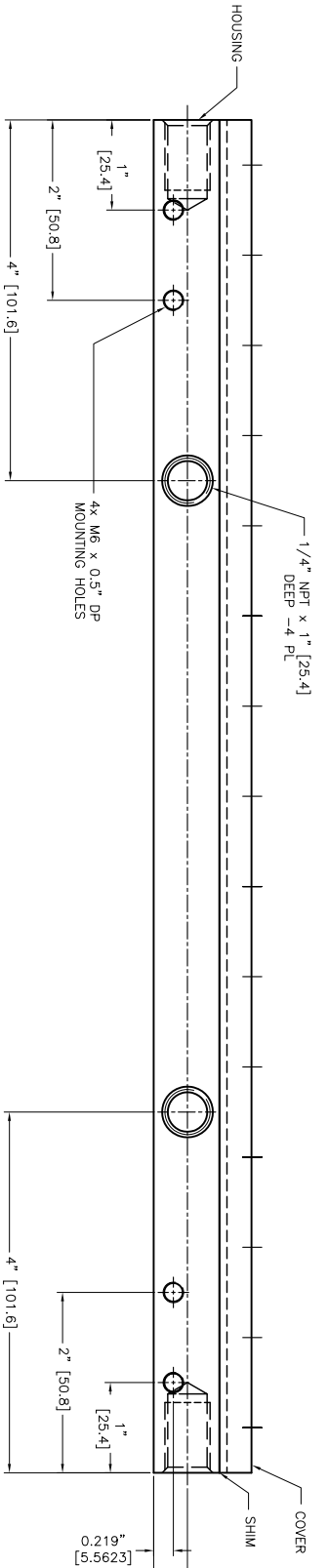
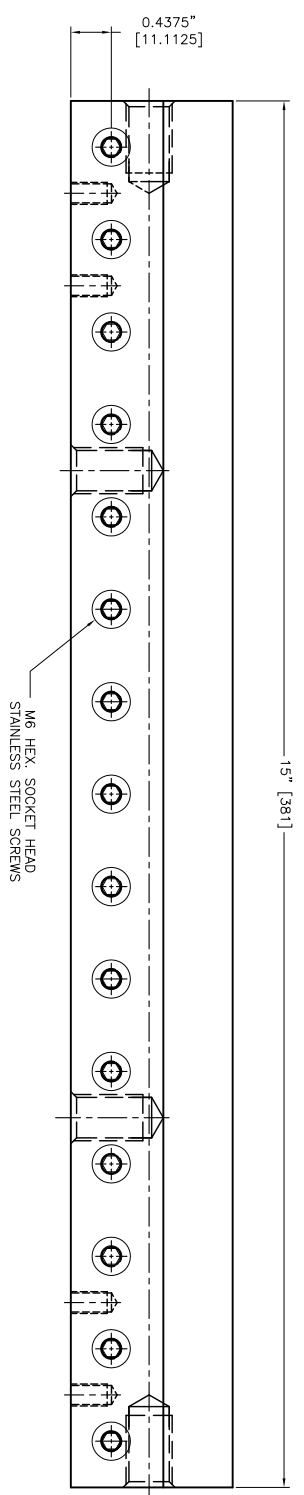
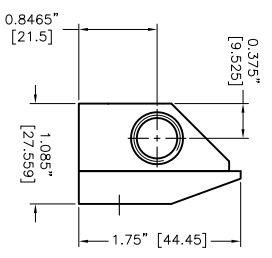


REV	DESCRIPTION	DATE	APPROVED
1	-	-	-

- NOTES:
- 1 ALL DIMENSIONS SHOWN ARE FINISH OPERATIONAL DIMENSIONS WHICH INCLUDE RESIDUAL COATINGS UNLESS OTHERWISE SPECIFIED.
 - 2 PART TO BE PACKED PROPERLY TO AVOID ANY DAMAGE WHILE SHIPPING & HANDLING.
 - 3 ALL HORIZONTAL DIMENSIONS ARE SYMMETRICAL ABOUT CENTER LINE UNLESS OTHERWISE SPECIFIED.



REVISIONS	DATE	APPROVED
1	-	-

THIRD ANGLE PROJECTION		
MATERIAL	ALUMINIUM	
FINISH	-	
PART NO	10015X	
NEXT ASSEMBLY	USED ON	
QTY PER PART NO	ASST	

REQUIREMENTS-SURFINESS	OTHERWISE SPECIFIED
1. FINISH (SEE SURF. FINISH)	
2. DIMENSIONING AND TOLERANCING IN ACCORDANCE WITH ANSI Y14.5 (1982)	
3. MACHINE FINISH 125 MICRO INCH RMS	
4. BREAK SHARP CORNERS .005 TO .015	
1. LINEAR DIMS	± .005
	± .010
	± .020
2. ANGLES	± 1/2°
3. ROUNDTOP .010 TR	
4. HOLES IN ACCORDANCE WITH AND 10397	

CONTRACT NUMBER	-
CLIENT	-
CONTRACTOR	-
DRAWN	S.PATIL
DATE	09/12/2013
DESIGN	ASSEMB
QA	ASSEMB
MANUFACTURING	
INSPECTION	
ELECTRICAL	
MECHANICAL	

TITLE	NEX FLOW AIR PRODUCTS CORP.
	10520 YONCE STREET, UNIT 359-220, RICHMOND HILL, ON L4C 3C7
	TEL: (416) 410-1313 & FAX: (416) 410-1806 WWW.NEX-FLOW.COM
SIZE	A4
DWG CODE	10015X
SCALE	1:1
DWG NO	XAK-15
RELDATE	REV
SHEET	1 OF 1