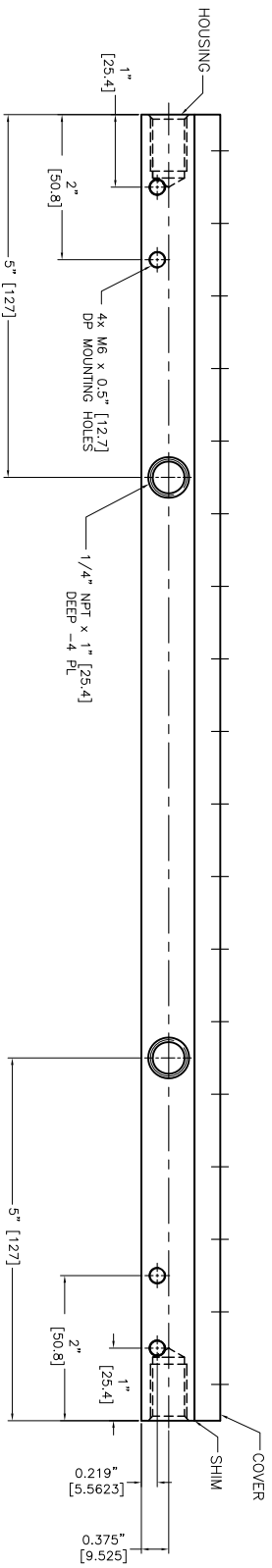
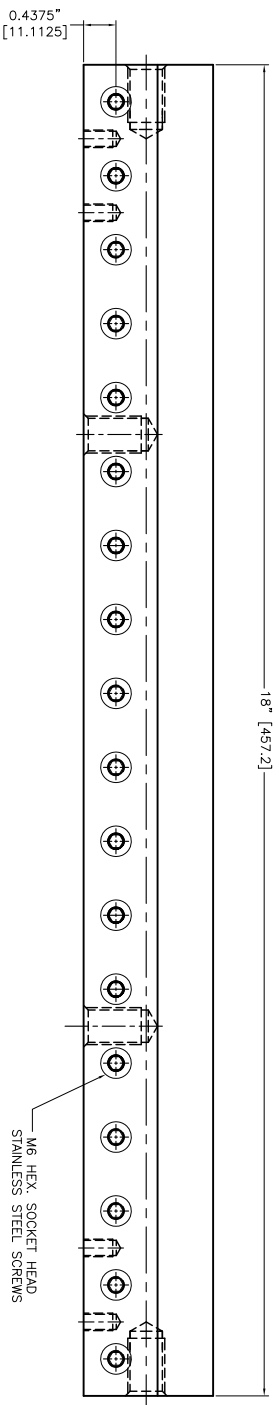
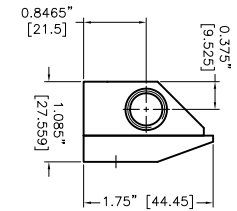


- NOTES:
- 1 ALL DIMENSIONS SHOWN ARE FINISH OPERATIONAL DIMENSIONS WHICH INCLUDE RESIDUAL COATINGS UNLESS OTHERWISE SPECIFIED.
  - 2 PART TO BE PACKED PROPERLY TO AVOID ANY DAMAGE WHILE SHIPPING & HANDLING.
  - 3 ALL HORIZONTAL DIMENSIONS ARE SYMMETRICAL ABOUT CENTER LINE UNLESS OTHERWISE SPECIFIED.



REVISIONS	DATE	BY	CHKD	APP'D	REASON
1	27/11/2013	AS/MSH	AS/MSH		ISSUE FOR MANUFACTURE
2					
3					
4					

CONTRACT NUMBER	---
CLIENT	---
CONTRACTOR	---
DRAWN	---
DESIGN	---
DATE	27/11/2013
SCALE	---
PRODUCT	---
STRESS	---
THERMAL	---
MATERIAL	---
ELECTRICAL	---
MECHANICAL	---

REQUIREMENTS - FINISHES	OTHER COMMENTS
1. FINISH AS PER MANUFACTURE	
2. DIMENSIONS AND TOLERANCES IN ACCORDANCE WITH ASME Y14.5 (1982)	
3. MAKE FINISH 125 MICRO INCH RMS & BREAK SHARP CORNERS .005 TO .015	
4. HOLES IN ACCORDANCE WITH AMO 10397	

1. LINEAR DIMS	± .005
2. ANGLES	± 1/2°
3. ROUNDTOP .010 TR	

TIME AND PROJECTION	
MATERIAL	ALUMINIUM
FINISH	---
NEXT ASSEMBLY	---
USED ON	---
QTY PER PART NO	---
PART NO	---

TITLE	NEX FLOW AIR PRODUCTS CORP.
10520 YONCE STREET, UNIT 259-220 RICHMOND HILL, ON L4C 3C7	
TEL: (416) 410-1313 & FAX: (416) 410-1806	WWW.NEX-FLOW.COM
DATE	27/11/2013
SCALE	1:1
SIZE	A4
DATE CODE	---
CDR NO	XAK-18
SCALE	1:1
SHEET	1 OF 1

8 7 6 5 4 3 2 1