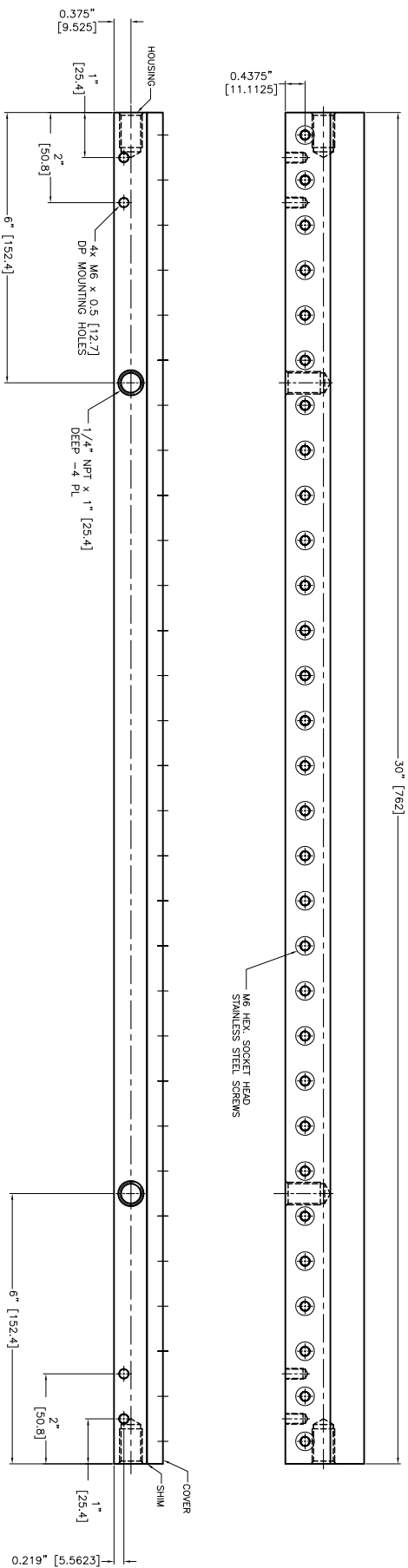
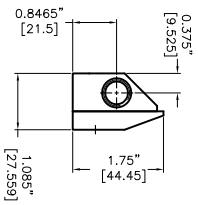


- NOTES:
- 1 ALL DIMENSIONS SHOWN ARE FINISH OPERATIONAL DIMENSIONS WHICH INCLUDE RESIDUAL COATINGS UNLESS OTHERWISE SPECIFIED.
 - 2 PART TO BE PACKED PROPERLY TO AVOID ANY DAMAGE WHILE SHIPPING & HANDLING.
 - 3 ALL HORIZONTAL DIMENSIONS ARE SYMMETRICAL ABOUT CENTER LINE UNLESS OTHERWISE SPECIFIED.



THIRD ANGLE PROJECTION		MATERIAL ALUMINIUM		FINISH -	
REQUIREMENTS-SURFACES OTHERWISE SPECIFIED	CONTRACT NUMBER	DATE	REV	DATE	REV
1. FINISH AS SHOWN (SEE FIELD) 2. DIMENSIONS AND TOLERANCES IN ACCORDANCE WITH ANSI Y14.5 (1982) 3. MAKE FINISH 126 MICRO INCH RMS & BREAK SHARP CORNERS .005 TO .015 LIMITS 4. HOLES IN ACCORDANCE WITH AMO 1039T	NEX FLOW AIR PRODUCTS CORP. 10520 YONCE STREET, UNIT 359-220 RICHMOND HILL, ON L4C 3C7 TEL: (416) 410-1313 & FAX: (416) 410-1806 WWW.NEX-FLOW.COM	27/11/2013	10030X	1:1	1
1. LINEAR DIMS .001 .002 .005 .010 .015 .020 .030 .040 .050 .060 .070 .080 .090 .100 .125 .150 .175 .200 .250 .300 .375 .450 .500 .625 .750 .875 1.000 1.250 1.500 1.750 2.000 2.500 3.000 3.750 4.500 5.000 6.250 7.500 8.750 10.000 12.500 15.000 17.500 20.000 25.000 30.000 37.500 45.000 50.000 62.500 75.000 87.500 100.000	STRESSES TENSILE COMPRESSIVE	MANUFACTURING TOLERANCES FINISHES ELECTROPLATING	SIZE DATE CODE DIM NO SCALE	QTY PER PART NO USED ON PART NO	REV DATE BY

8 7 6 5 4 3 2 1