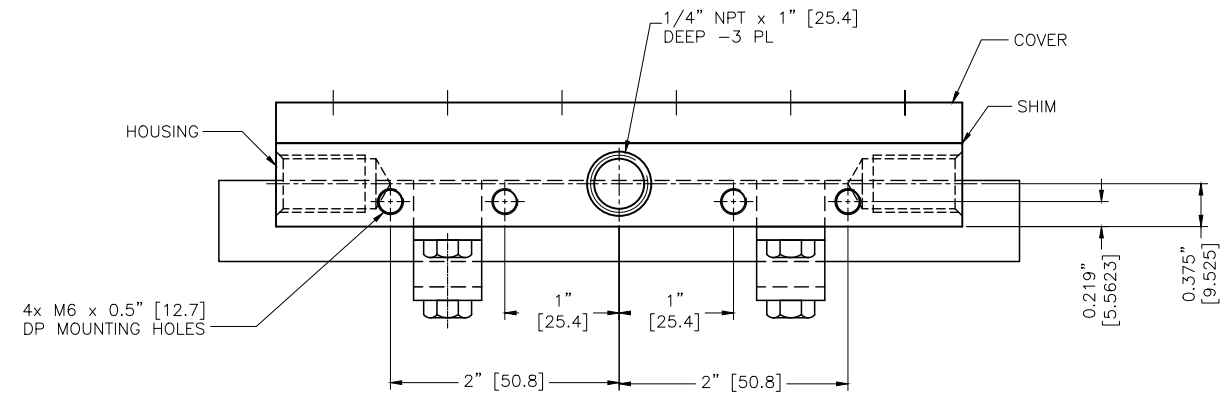
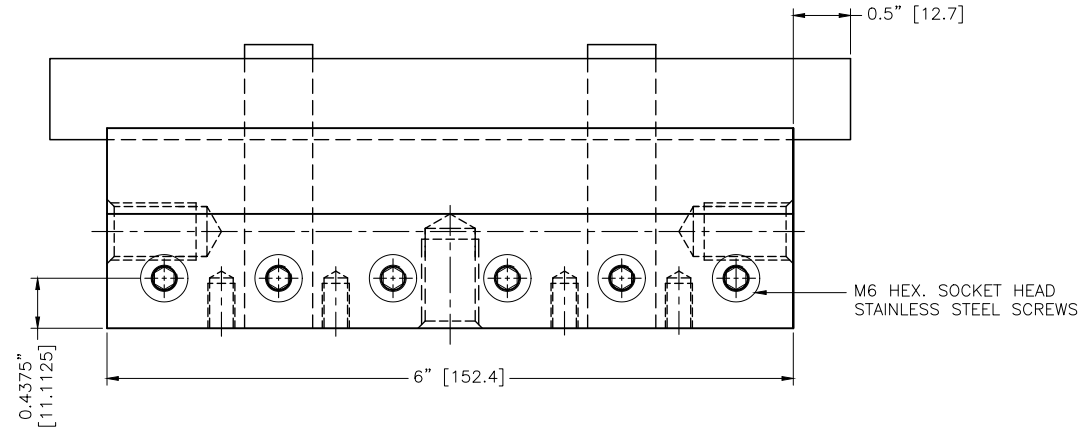
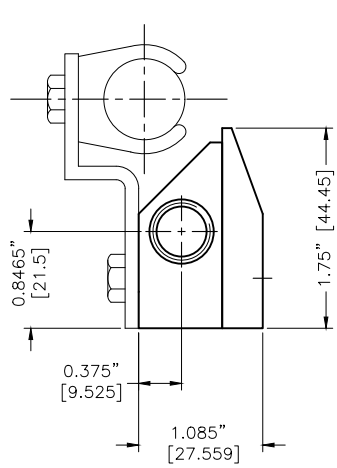


NOTES:

- 1 ALL DIMENSIONS SHOWN ARE FINISH OPERATIONAL DIMENSIONS WHICH INCLUDE RESIDUAL COATINGS UNLESS OTHERWISE SPECIFIED.
- 2 PART TO BE PACKED PROPERLY TO AVOID ANY DAMAGE WHILE SHIPPING & HANDLING.
- 3 ALL HORIZONTAL DIMENSIONS ARE SYMMETRICAL ABOUT CENTER LINE UNLESS OTHERWISE SPECIFIED.



**PROPRIETARY**  
 REPRODUCTION OR DISTRIBUTION  
 WITHOUT WRITTEN CONSENT OF  
 NEXFLOW™ IS PROHIBITED.

THIRD ANGLE PROJECTION		-	-	-	-	REQUIREMENTS—UNLESS OTHERWISE SPECIFIED	CONTRACT NUMBER	NEX FLOW AIR PRODUCTS CORP. 10520 YONGE STREET, UNIT 35B-220, RICHMOND HILL, ON L4C 3C7 TEL: (416) 410-1313 & FAX: (416) 410-1806 www.nex-flow.com					
		GENERAL				1. DIMS ARE IN INCHES (MM)	CLIENT	TITLE					
MATERIAL	ALUMINIUM	-	-	-	-	2. DIMENSIONING AND TOLERANCING IN ACCORDANCE WITH ANSI Y14.5 (1982)	CONTRACTOR	OUTLINE DRAWING OF					
FINISH	-	-	-	-	-	3. MACHINE FINISH 125 MICRO INCH RMS	DRAWN	DATE	6" X-STREAM AIR BLADE AIR KNIFE				
		-	-	-	-	4. INTERNAL RADII .015	CHIRAGS	10/04/2021	WITH RN IONIZER / VS IONIZER				
		-	-	-	-	5. BREAK SHARP CORNERS .005 TO .015	DESIGN	CHECKED	SIZE	CAGE CODE	DWG NO	RELEASE	REV
		-	-	-	-	LIMITS	LES	LES	-	-	15006X - 16006X	-	-
		-	-	-	-	1. LINEAR DIMS.	PROJECT	Q.A.	-	-	-	-	-
		-	-	-	-	XX = .005	STRESS	MANUFACTURING	-	-	-	-	-
		-	-	-	-	XX = .010	MECHANISM	ELECTRICAL	-	-	-	-	-
		-	-	-	-	XX = .030			SCALE	1:1	CAD NO	-	SHEET 1 OF 1
		-	-	-	-	2. ANGLES = ± 1/2"							
		-	-	-	-	3. RUNOUT .010 TIR							
		-	-	-	-	4. HOLES IN ACCORDANCE WITH 10387							
		-	-	-	-								