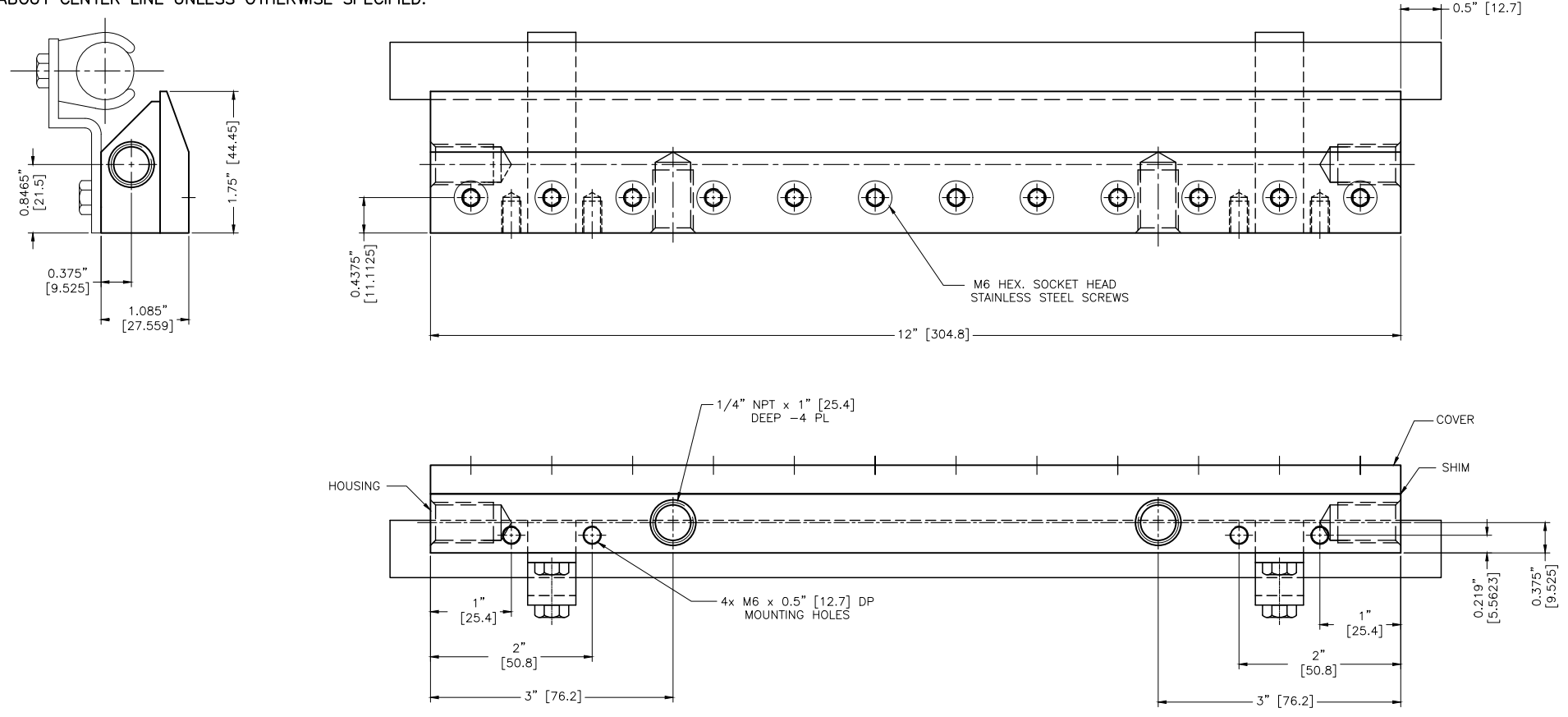


NOTES:

- 1 ALL DIMENSIONS SHOWN ARE FINISH OPERATIONAL DIMENSIONS WHICH INCLUDE RESIDUAL COATINGS UNLESS OTHERWISE SPECIFIED.
- 2 PART TO BE PACKED PROPERLY TO AVOID ANY DAMAGE WHILE SHIPPING & HANDLING.
- 3 ALL HORIZONTAL DIMENSIONS ARE SYMMETRICAL ABOUT CENTER LINE UNLESS OTHERWISE SPECIFIED.



PROPRIETARY
 REPRODUCTION OR DISTRIBUTION
 WITHOUT WRITTEN CONSENT OF
 NEXFLOW™ IS PROHIBITED.

THIRD ANGLE PROJECTION		-	-	-	-	REQUIREMENTS—UNLESS OTHERWISE SPECIFIED	CONTRACT NUMBER	NEX FLOW AIR PRODUCTS CORP. 10520 YONGE STREET, UNIT 358-220, RICHMOND HILL, ON L4C 3C7 TEL: (416) 410-1313 & FAX: (416) 410-1806 www.nex-flow.com								
	MATERIAL	ALUMINIUM	-	-	-	GENERAL	CLIENT	TITLE								
FINISH	-	-	-	-	-	1. DIMS ARE IN INCHES (MM)	CONTRACTOR	OUTLINE DRAWING OF								
	-	-	-	-	-	2. DIMENSIONING AND TOLERANCING IN ACCORDANCE WITH ANSI Y14.5 (1982)	DATE	12" X-STREAM AIR BLADE AIR KNIFE								
FINISH	-	-	-	-	-	3. MACHINE FINISH 125 MICRO INCH RMS	CHIRAGS	WITH RN IONIZER / VS IONIZER								
-	-	-	-	-	-	4. INTERNAL RADI .015	DESIGN	CHECKED	SIZE	CAGE CODE	DWG NO	RELEASE	REV			
-	-	-	-	-	-	5. BREAK SHARP CORNERS .005 TO .015	LES	-	-	15012X - 16012X	-	-				
FINISH	-	-	-	-	-	LIMITS	PROJECT	Q.A.	SCALE	1:1	CAD NO	-	SHEET	1	OF	1
-	-	-	-	-	-	1. LINEAR DIMS.	STRESS	MANUFACTURING	-	-	-	-	-			
-	-	-	-	-	-	XX = .005	MECHANISM	ELECTRICAL	-	-	-	-	-			
-	-	-	-	-	-	XX = .010	-	-	-	-	-	-	-			
-	-	-	-	-	-	X = .030	-	-	-	-	-	-	-			
-	-	-	-	-	-	2. ANGLES = ± 1/2"	-	-	-	-	-	-	-			
-	-	-	-	-	-	3. RUNOUT .010 TIR	-	-	-	-	-	-	-			
-	-	-	-	-	-	4. HOLES IN ACCORDANCE WITH AND 10387	-	-	-	-	-	-	-			
-	-	-	-	-	-	PART NO	-	-	-	-	-	-	-			