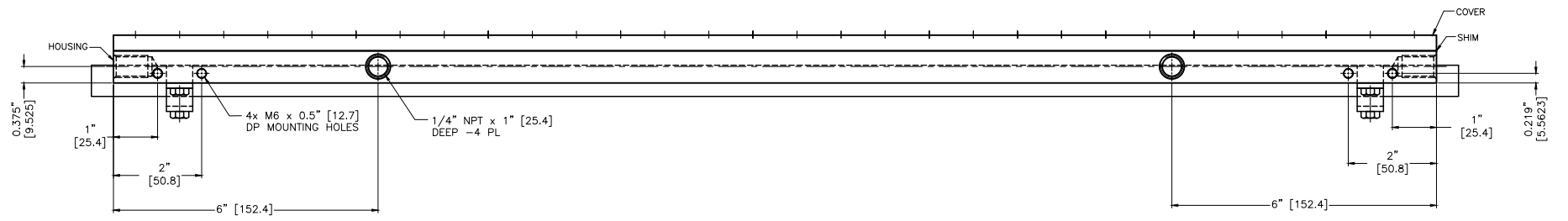
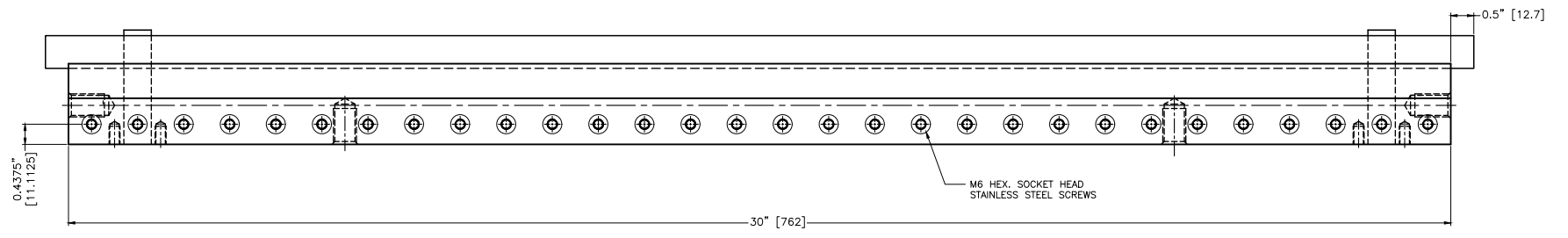
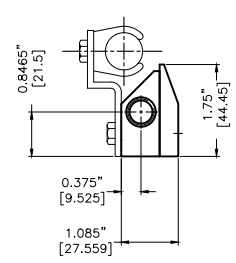


- NOTES:
- 1 ALL DIMENSIONS SHOWN ARE FINISH OPERATIONAL DIMENSIONS WHICH INCLUDE RESIDUAL COATINGS UNLESS OTHERWISE SPECIFIED.
 - 2 PART TO BE PACKED PROPERLY TO AVOID ANY DAMAGE WHILE SHIPPING & HANDLING.
 - 3 ALL HORIZONTAL DIMENSIONS ARE SYMMETRICAL ABOUT CENTER LINE UNLESS OTHERWISE SPECIFIED.



PROPRIETARY
 REPRODUCTION OR DISTRIBUTION
 WITHOUT WRITTEN CONSENT OF
 NEXFLOW™ IS PROHIBITED.

THIRD ANGLE PROJECTION		REQUIREMENTS—UNLESS OTHERWISE SPECIFIED				CONTRACT NUMBER	NEX FLOW AIR PRODUCTS CORP. 10520 YONGE STREET, UNIT 358-220, RICHMOND HILL, ON L4C 3C7 TEL: (416) 410-1313 & FAX: (416) 410-1806 www.nex-flow.com			
		GENERAL				CLIENT	10520 YONGE STREET, UNIT 358-220, RICHMOND HILL, ON L4C 3C7 TEL: (416) 410-1313 & FAX: (416) 410-1806 www.nex-flow.com			
MATERIAL	ALUMINIUM	1. DIMS ARE IN INCHES (MM)				CONTRACTOR	TITLE			
		2. DIMENSIONING AND TOLERANCING IN ACCORDANCE WITH ANSI Y14.5 (1982)				DRAWN	OUTLINE DRAWING OF			
FINISH	-	3. MACHINE FINISH 125 MICRO INCH RMS				DATE	30" X-STREAM AIR BLADE AIR KNIFE			
		4. INTERNAL RADII .015				CHIRAG.S	WITH RN IONIZER / VS IONIZER			
		5. BREAK SHARP CORNERS .005 TO .015				DESIGN	CHECKED			
		LIMITS				LES	PROJECT			
		1. LINEAR DIMS.				Q.A.	MANUFACTURING			
		.XXX = .005				STRESS	SIZE			
		.XX = .010				MANUFACTURING	CAGE CODE			
		.X = .030				DESIGN	DWG NO			
		2. ANGLES = ± 1/2"				LES	15030X - 16030X			
		3. RUNOUT .010 TIR				MATERIALS	RELEASE			
		4. HOLES IN ACCORDANCE WITH AND 10387				ELECTRICAL	REV			
PART NO	USED ON	QTY PER ASSY	PART NO	MECHANISM	SCALE	1:1		CAD NO	SHEET 1 OF 1	