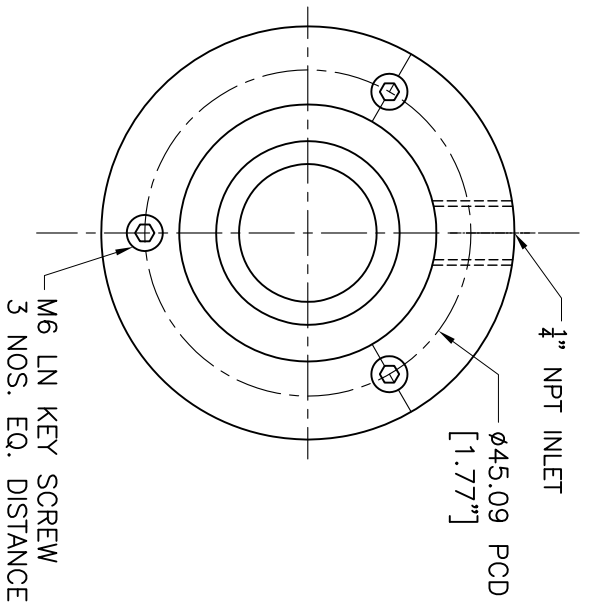
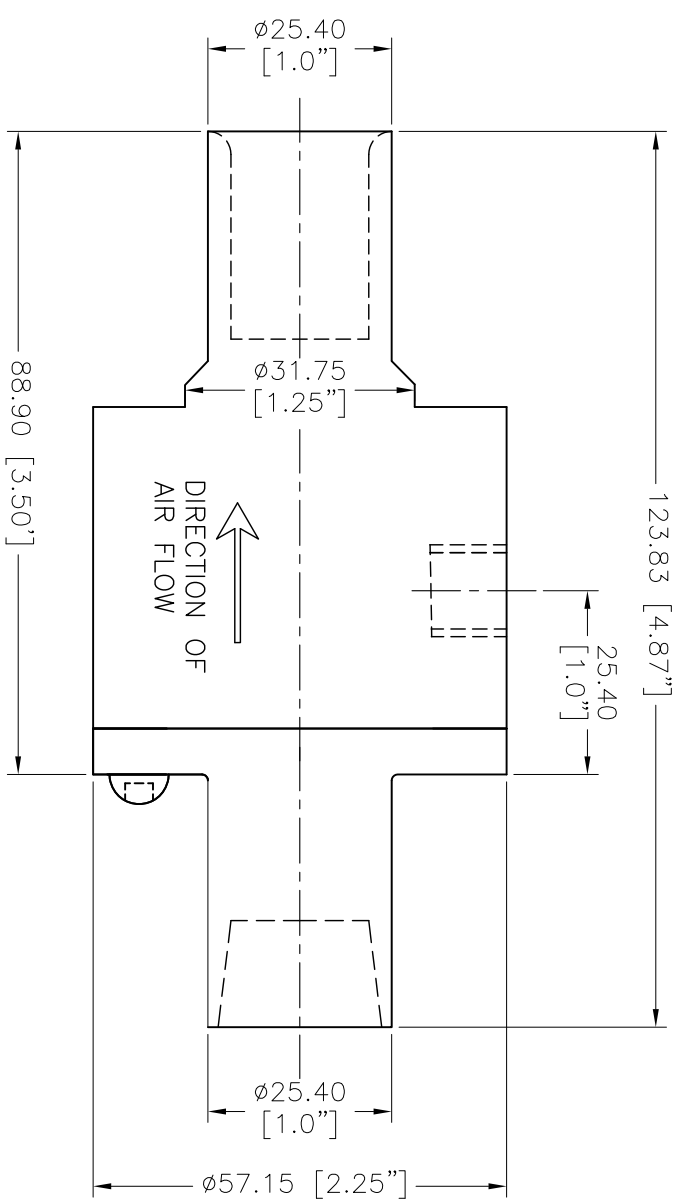


NOTES:
 1 ALL DIMENSIONS SHOWN ARE FINISH OPERATIONAL DIMENSIONS WHICH INCLUDE RESIDUAL COATINGS UNLESS OTHERWISE SPECIFIED.



REQUIREMENTS UNLESS OTHERWISE SPECIFIED 1. DIMS ARE IN INCHES (MM) 2. DIMS ARE TO BE MAINTAINED IN ACCORDANCE WITH ANSI Y14.5 (1982) 3. MACHINE FINISH 125 MICRO INCH RMS 4. INTERNAL RADIUS .015 5. BREAK SHARP CORNERS .005 TO .015 6. Holes in accordance with and 10397		CONTRACT NUMBER - CLIENT - CONTRACTOR - PROJECT - DATE 10/06/2013 CHECKED LES DESIGN S.PATIL PROJECT O.A.		MANUFACTURING DATE 10/06/2013 CHECKED LES DESIGN S.PATIL PROJECT O.A.		FINISH XXX = .005 XX = .010 X = .030 = ± 1/2° 2. ANGLES = ± 1/2° 3. ROUNDT .010 TR 4. HOLES IN ACCORDANCE WITH AND 10397		FINISH S.S. 304 THIRD ANGLE PROJECTION		REQUIREMENTS UNLESS OTHERWISE SPECIFIED 1. DIMS ARE IN INCHES (MM) 2. DIMS ARE TO BE MAINTAINED IN ACCORDANCE WITH ANSI Y14.5 (1982) 3. MACHINE FINISH 125 MICRO INCH RMS 4. INTERNAL RADIUS .015 5. BREAK SHARP CORNERS .005 TO .015 6. Holes in accordance with and 10397	
CONTRACT NUMBER - CLIENT - CONTRACTOR - PROJECT - DATE 10/06/2013 CHECKED LES DESIGN S.PATIL PROJECT O.A.		MANUFACTURING DATE 10/06/2013 CHECKED LES DESIGN S.PATIL PROJECT O.A.		FINISH S.S. 304 THIRD ANGLE PROJECTION		REQUIREMENTS UNLESS OTHERWISE SPECIFIED 1. DIMS ARE IN INCHES (MM) 2. DIMS ARE TO BE MAINTAINED IN ACCORDANCE WITH ANSI Y14.5 (1982) 3. MACHINE FINISH 125 MICRO INCH RMS 4. INTERNAL RADIUS .015 5. BREAK SHARP CORNERS .005 TO .015 6. Holes in accordance with and 10397					
CONTRACT NUMBER - CLIENT - CONTRACTOR - PROJECT - DATE 10/06/2013 CHECKED LES DESIGN S.PATIL PROJECT O.A.		MANUFACTURING DATE 10/06/2013 CHECKED LES DESIGN S.PATIL PROJECT O.A.		FINISH S.S. 304 THIRD ANGLE PROJECTION		REQUIREMENTS UNLESS OTHERWISE SPECIFIED 1. DIMS ARE IN INCHES (MM) 2. DIMS ARE TO BE MAINTAINED IN ACCORDANCE WITH ANSI Y14.5 (1982) 3. MACHINE FINISH 125 MICRO INCH RMS 4. INTERNAL RADIUS .015 5. BREAK SHARP CORNERS .005 TO .015 6. Holes in accordance with and 10397					

NEX FLOW AIR PRODUCTS CORP.
 10520 YONCE STREET, UNIT 388-220, RICHMOND HILL, ON L4C 3C7
 TEL: (416) 410-1313 & FAX: (416) 410-1808 www.nfcr-flow.com

TYPE
 OUTLINE DRAWING OF
 1" S.S.304 RING VAC

SIZE
 C

QMS CODE
 30001S

REV
 P

SCALE
 1:1

CAD NO
 1"-SSRV

SHEET
 1

OF
 1