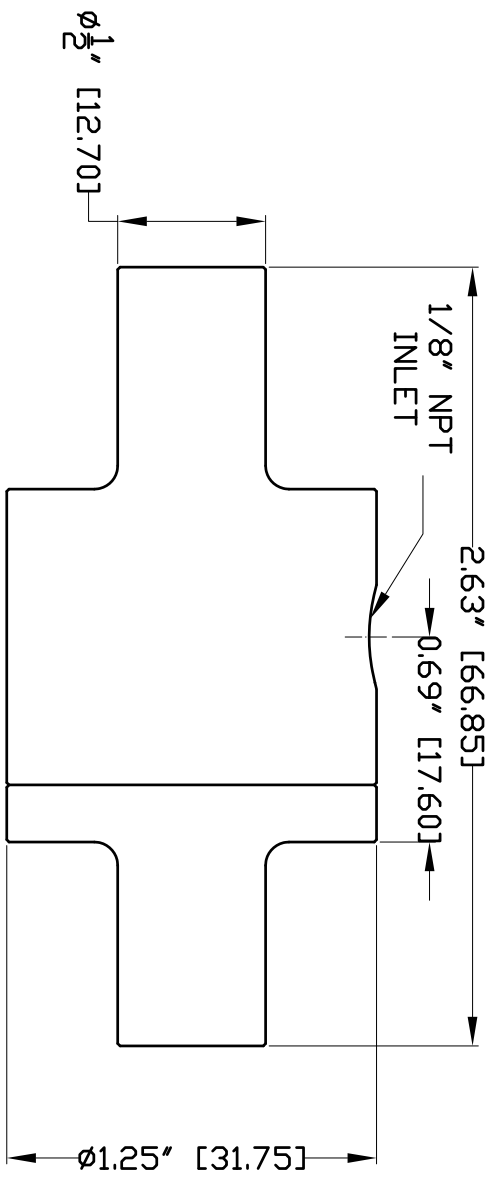
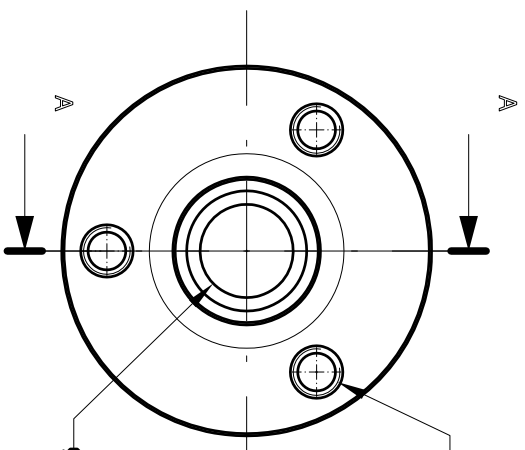


9 8 7 6 5 4 3 2 1

- NOTES:
1. ALL DIMENSIONS SHOWN ARE IN inches (mm)
  2. ALL DIMENSIONS SHOWN ARE FINISH OPERATIONAL DIMENSIONS WHICH INCLUDE RESIDUAL COATINGS UNLESS OTHERWISE SPECIFIED.
  3. PART TO BE FLAT PACKED PROPERLY TO AVOID ANY DAMAGE WHILE SHIPPING & HANDLING.
  4. ALL HORIZONTAL DIMENSIONS ARE SYMMETRICAL ABOUT VERTICAL CENTER LINE UNLESS OTHERWISE SPECIFIED.



Section view A-A



Front view

REVISIONS			
REV	DESCRIPTION	DATE	APPROVED
-	-	-	-

M4 X 3 HOLES,  
120° APART  
DN 0.95"[24] PCD

Ø0.31" [Ø8.00]

<p><b>REVISIONS</b></p> <p>1. LINE/DATE: 30/04/2016</p> <p>2. APPROVED: [Signature]</p> <p>3. AMOUNT: 2 1/2"</p> <p>4. HOLE IN ACCORDANCE WITH AND VACU</p>		<p><b>CONTRACT NUMBER</b></p> <p>30/04/2016</p>		<p><b>THE</b></p> <p>1/2" ALUMINIUM RING VAC</p>	
<p><b>GENERAL</b></p> <p>1. DIMS ARE IN INCHES (MM)</p> <p>2. APPROVED WITH AND VACU</p> <p>3. MACHINE FINISH 125 MICRO INCH RMS</p> <p>4. INTERNAL FLAKE 200</p> <p>5. BRIDGE SHAW CORP. 2005 TO 2015</p>		<p><b>CONTRACTOR</b></p> <p>ALTRV</p>		<p><b>DATE</b></p> <p>30/04/2016</p>	
<p><b>REVISIONS</b></p> <p>1. LINE/DATE: 30/04/2016</p> <p>2. APPROVED: [Signature]</p> <p>3. AMOUNT: 2 1/2"</p> <p>4. HOLE IN ACCORDANCE WITH AND VACU</p>		<p><b>CONTRACTOR</b></p> <p>ALTRV</p>		<p><b>DATE</b></p> <p>30/04/2016</p>	
<p><b>REVISIONS</b></p> <p>1. LINE/DATE: 30/04/2016</p> <p>2. APPROVED: [Signature]</p> <p>3. AMOUNT: 2 1/2"</p> <p>4. HOLE IN ACCORDANCE WITH AND VACU</p>		<p><b>CONTRACTOR</b></p> <p>ALTRV</p>		<p><b>DATE</b></p> <p>30/04/2016</p>	

9 8 7 6 5 4 3 2 1

**NEX FLOW AIR PRODUCTS CORP.**  
10520 YONE STREET, UNIT 359-220, RICHMOND HILL, ON L4C 3C7  
TEL: (416) 410-1313 & FAX: (416) 410-1806 [www.nex-flow.com](http://www.nex-flow.com)