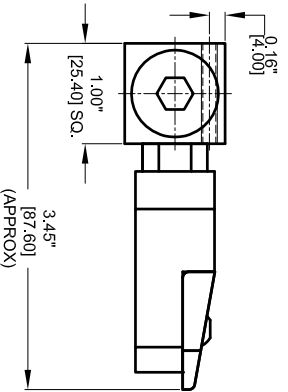
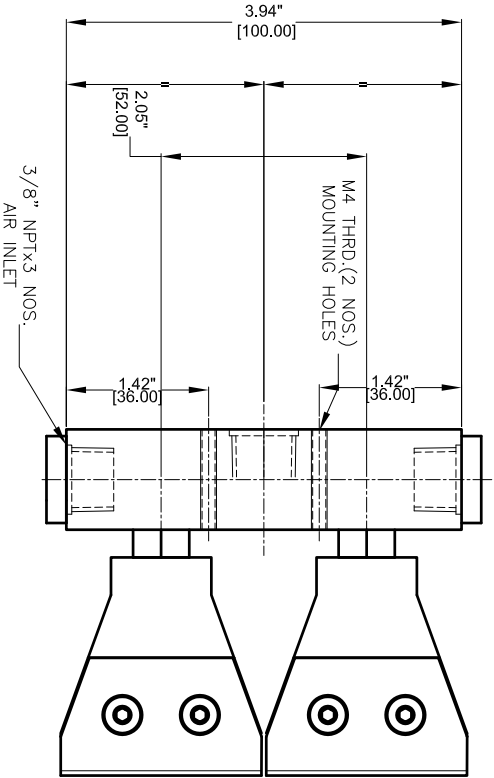
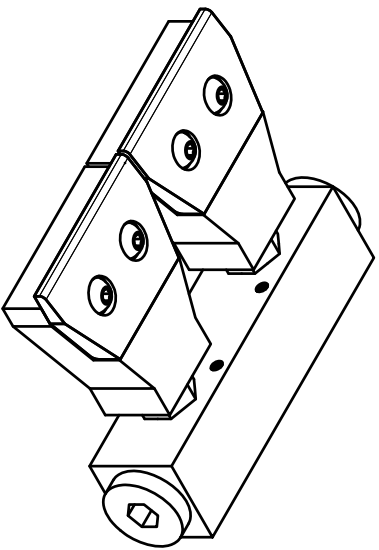


REV	DESCRIPTION	DATE	APPROVED
1	-	-	-



REVISIONS	DATE	APPROVED
1	-	-

<p>REQUIREMENTS - FINISHES OTHERWISE SPECIFIED</p> <p>1. FINISH AS SHOWN 2. DIMENSIONS AND TOLERANCES IN ACCORDANCE WITH ASME Y14.5 (1982) 3. MACHINE FINISH 125 MICRO INCH RMS 4. BREAK SHARP CORNERS .005 TO .015</p> <p>TOLERANCES</p> <p>1. LINEAR DIMS: .001 - .005 .006 - .010 .011 - .030 2. ANGLES = ± 1/2° 3. ROUNDOFF .010 MIN 4. HOLES IN ACCORDANCE WITH ANSI H10.9B7</p>	<p>CONTRACT NUMBER -</p> <p>CLIENT -</p> <p>CONTRACTOR -</p> <p>DRAWN -</p> <p>CHECKED -</p> <p>DATE 28/09/2014</p> <p>MANUFACTURING</p> <p>MANUFACTURER -</p> <p>FINISH -</p> <p>ELECTRICAL -</p>	<p>TITLE NEX FLOW AIR PRODUCTS CORP. 10520 YONCE STREET, UNIT 259-220 RICHMOND HILL, ON L4C 3C7 TEL: (416) 410-1313 & FAX: (416) 410-1806 www.nex-flow.com</p> <p>2 PORT STANDARD FLOW MANIFOLD WITH 47011 FLATJET</p> <p>SIZE -</p> <p>DWG CODE 46002+47011</p> <p>SCALE 1:1</p>
---	--	--

FINISH	
MATERIAL	AL/SS304/SS316L
TEMPERATURE PROTECTION	

PART NO	
NEXT ASSEMBLY	
USED ON	
QTY PER PART NO	

8 7 6 5 4 3 2 1