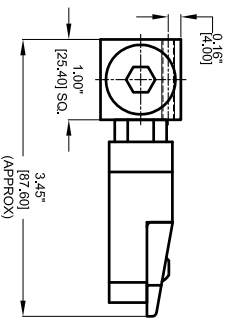
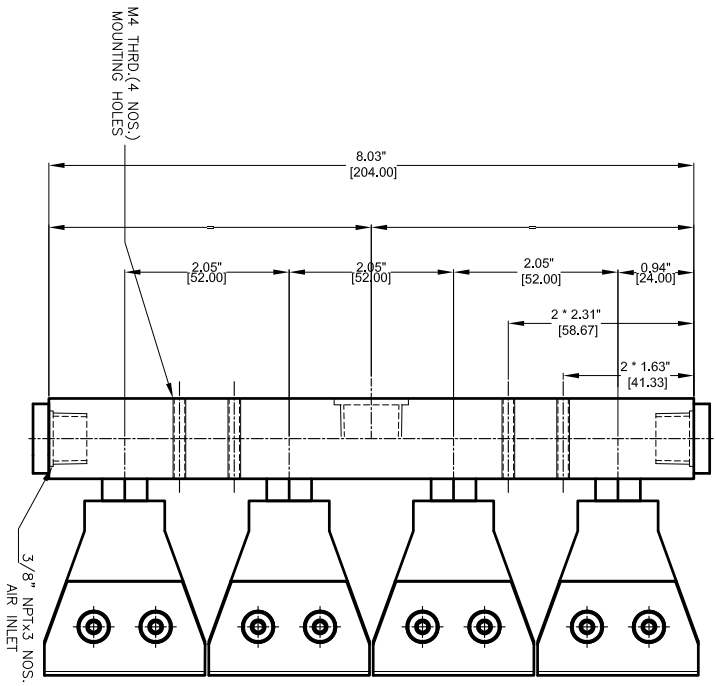
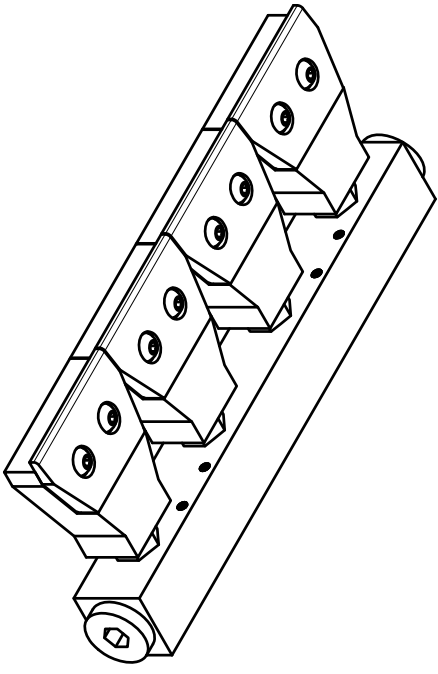


REVISIONS		DATE	APPROVED
REV	DESCRIPTION		
1	-	-	-



 	<b>TEMP. AND PROTECTION</b> AL/SS304/SS316L	<b>FINISH</b> -	<b>PART NO.</b> -	<b>NEXT ASSEMBLY</b> -	<b>USED ON</b> -	<b>QTY PER PART NO.</b> -	<b>REQUIREMENTS - FINISHES OTHER THAN SPECIFIED</b> 1. FINISH AS SPECIFIED 2. DIMENSIONING AND TOLERANCING IN ACCORDANCE WITH ASME Y14.5 (1982) 3. MACHINE FINISH 125 MICRO INCH RMS & BREAK SHARP CORNERS .005 TO .015 LIMITS 4. HOLES IN ACCORDANCE WITH AND 10397	<b>CONTRACT NUMBER</b> -	<b>CLIENT</b> -	<b>DATE</b> 28/09/2014	<b>DESIGNED BY</b> -	<b>DATE</b> -	<b>MANUFACTURING</b> -	<b>SIZE</b> -	<b>DWG NO.</b> 46004-47011	<b>RELIEF</b> -	<b>REV</b> -
	<b>MATERIAL</b> AL/SS304/SS316L	<b>FINISH</b> -	<b>PART NO.</b> -	<b>NEXT ASSEMBLY</b> -	<b>USED ON</b> -	<b>QTY PER PART NO.</b> -	<b>REQUIREMENTS - FINISHES OTHER THAN SPECIFIED</b> 1. LINEAR DIMS: .005 TO .010 2. ANGLES = ± 1/2° 3. ROUNDOUT .010 MIN	<b>CONTRACT NUMBER</b> -	<b>CLIENT</b> -	<b>DATE</b> 28/09/2014	<b>DESIGNED BY</b> -	<b>DATE</b> -	<b>MANUFACTURING</b> -	<b>SIZE</b> -	<b>DWG NO.</b> 46004-47011	<b>RELIEF</b> -	<b>REV</b> -

**NEX FLOW AIR PRODUCTS CORP.**  
 10520 YONCE STREET, UNIT 259-220 RICHMOND HILL, ON L4C 3C7  
 TEL: (416) 410-1313 & FAX: (416) 410-1806 [www.nex-flow.com](http://www.nex-flow.com)  
**4 PORT STANDARD FLOW MANIFOLD WITH 47011 FLATJET**