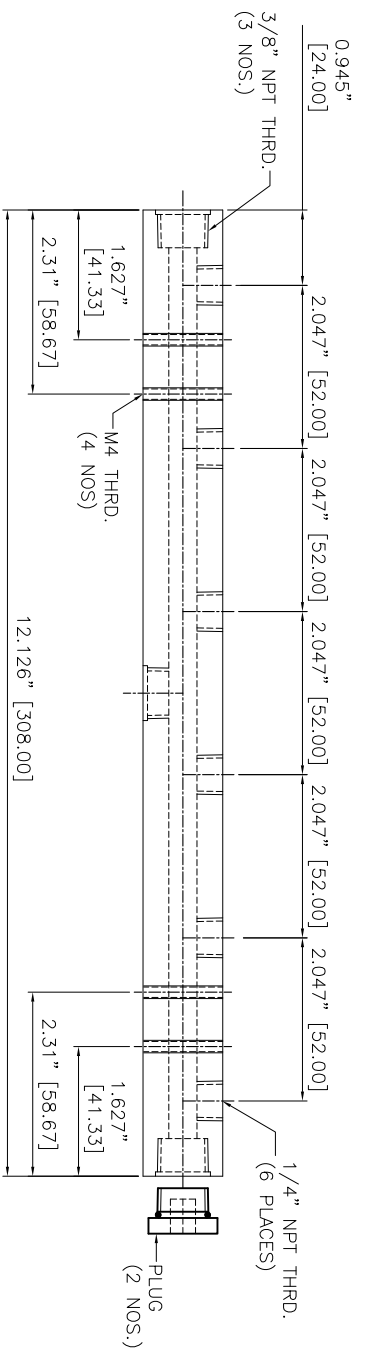
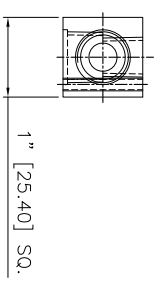


REVISIONS		DATE	APPROVED
REV	DESCRIPTION		
1			
2			

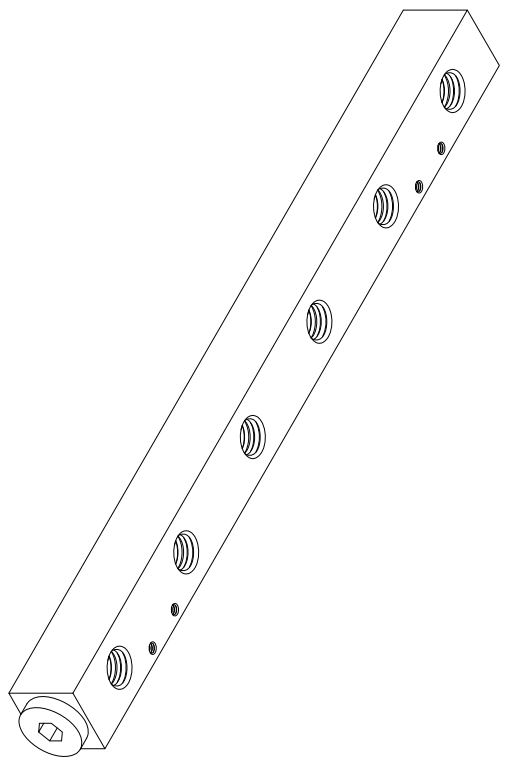
- NOTES:
- ALL DIMENSIONS SHOWN ARE IN INCHES AND DIMENSIONS IN '()' ARE IN MM
 - ALL DIMENSIONS SHOWN ARE FINISH OPERATIONAL DIMENSIONS WHICH INCLUDE RESIDUAL COATINGS UNLESS OTHERWISE SPECIFIED.
 - PART TO BE FLAT PACKED PROPERLY TO AVOID ANY DAMAGE WHILE SHIPPING & HANDLING.
 - ALL HORIZONTAL DIMENSIONS ARE SYMMETRICAL ABOUT VERTICAL CENTER LINE UNLESS OTHERWISE SPECIFIED.



FRONT VIEW



SIDE VIEW
(without plug)



ISOMETRIC VIEW

		THIRD ANGLE PROJECTION	
MATERIAL SS 304/SS 316/AL		FINISH -	
REQUIREMENTS-UNLESS OTHERWISE SPECIFIED		CONTRACT NUMBER -	
1. DIM. USE SI UNITS (STANDARD) 2. DIMENSIONS AND TOLERANCES IN ACCORDANCE WITH ANSI Y14.5 (1982) 3. MAKE FINISH 125 MICRO INCH RMS & BREAK SHARP CORNERS .005 TO .015 LIMITS 4. HOLES IN ACCORDANCE WITH ANSI 109B7		CLIENT - CONTRACTOR - DATE 02/05/2014 S/P/ATL DESIGN ASHISH QA	
1. LINEAR DIMS: .0005 ± .0005 .001 ± .001 .010 ± .010 2. ANGLES = ± 1/2° 3. ROUNDOFF .010 R/R		MANUFACTURING MANUALS ELECTRICAL	
TITLE NEX FLOW AIR PRODUCTS CORP. 10520 YONCE STREET, UNIT 259-220, RICHMOND HILL, ON L4C 3C7 TEL: (416) 410-1313 & FAX: (416) 410-1806 www.nex-flow.com		SIZE DATE CODE 1/1 1/1	
OUTLINE DRAWING OF 6 PORT REGULAR FLOW MANIFOLD		QWP NO 46006 MAN-6	
PART NO -		SCALE 1:1	
NEXT ASSEMBLY -		SHEET 1 OF 1	
USED ON SS		REL P	
QTY PER PART NO -		REV -	