

8 7 6 5 4 3 2 1

E

D

C

B

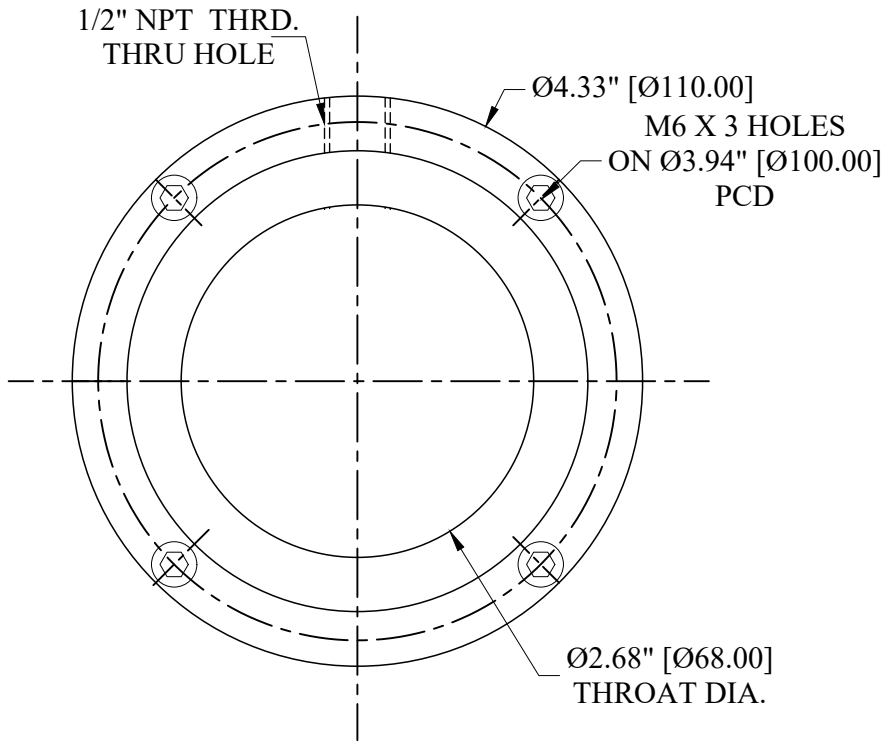
E

D

C

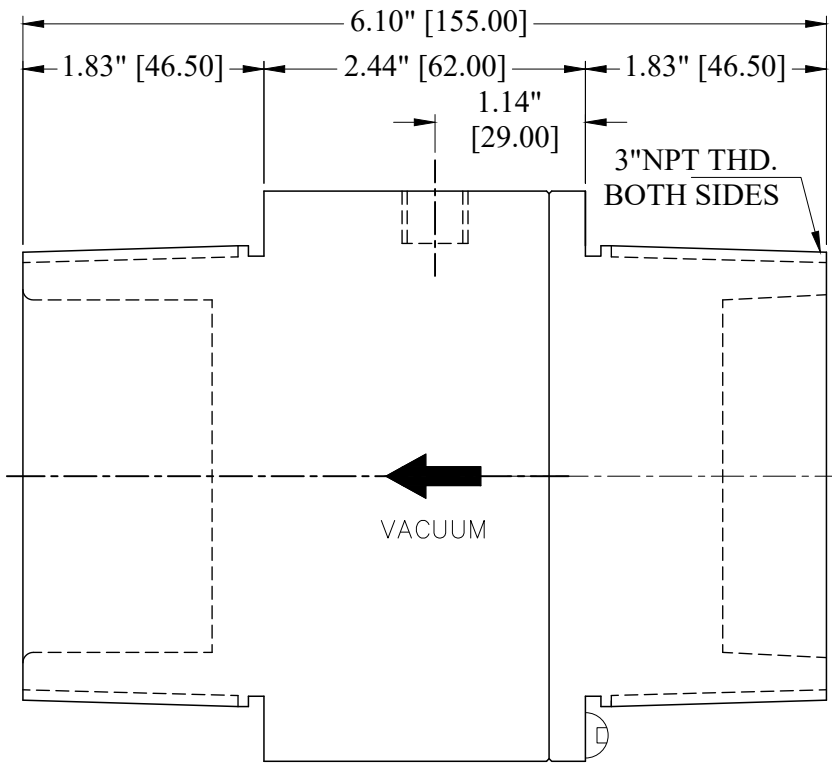
B

1/2" NPT THRD.
THRU HOLE



Ø4.33" [Ø110.00]
M6 X 3 HOLES
ON Ø3.94" [Ø100.00]
PCD

Ø2.68" [Ø68.00]
THROAT DIA.



VACUUM

PROPRIETARY
REPRODUCTION OR DISTRIBUTION
WITHOUT WRITTEN CONSENT OF
NEXFLOW™ IS PROHIBITED.

THIRD ANGLE PROJECTION					
MATERIAL	ALUMINIUM				
FINISH	BLUE ANODIZING				
NEXT ASSEMBLY	USED ON	QTY PER ASSY	PART NO.		
PART NO.					

REQUIREMENTS—UNLESS OTHERWISE SPECIFIED			
GENERAL			
1.	DIMS ARE IN INCHES (MM)		
2.	DIMENSIONING AND TOLERANCING IN ACCORDANCE WITH ANSI Y14.5 (1982)		
3.	MACHINE FINISH 125 MICRO INCH RMS		
4.	INTERNAL RADI .015		
5.	BREAK SHARP CORNERS .005 TO .015		
LIMITS			
1.	LINEAR DIMS.		
	XXX = .005		
	XX = .010		
	X = .030		
2.	ANGLES = ± 1/2°		
3.	RUNOUT .010 TIR		
4.	HOLES IN ACCORDANCE WITH AND 10387		

CONTRACT NUMBER	—
CLIENT	—
CONTRACTOR	—
DRAWN	CHIRAG.S
DATE	25/04/2021
CHECKED	LES
PROJECT	D.A.
STRESS	—
MANUFACTURING	—
THERMAL	—
MATERIALS	—
MECHANICAL	—
ELECTRICAL	—

SIZE	C
CAGE CODE	—
DWG NO	30006T
SCALE	1:1
CAD NO	—

NEX FLOW AIR PRODUCTS CORP. 10520 YONGE STREET, UNIT 358-220, RICHMOND HILL, ON L4C 3C7 TEL: (416) 410-1313 & FAX: (416) 410-1806 www.nex-flow.com			
2" THREADED ALUMINIUM RING VAC			
RELEASE	P	REV	—
SHEET	1	OF	1

8 7 6 5 4 3 2 1

A

A