

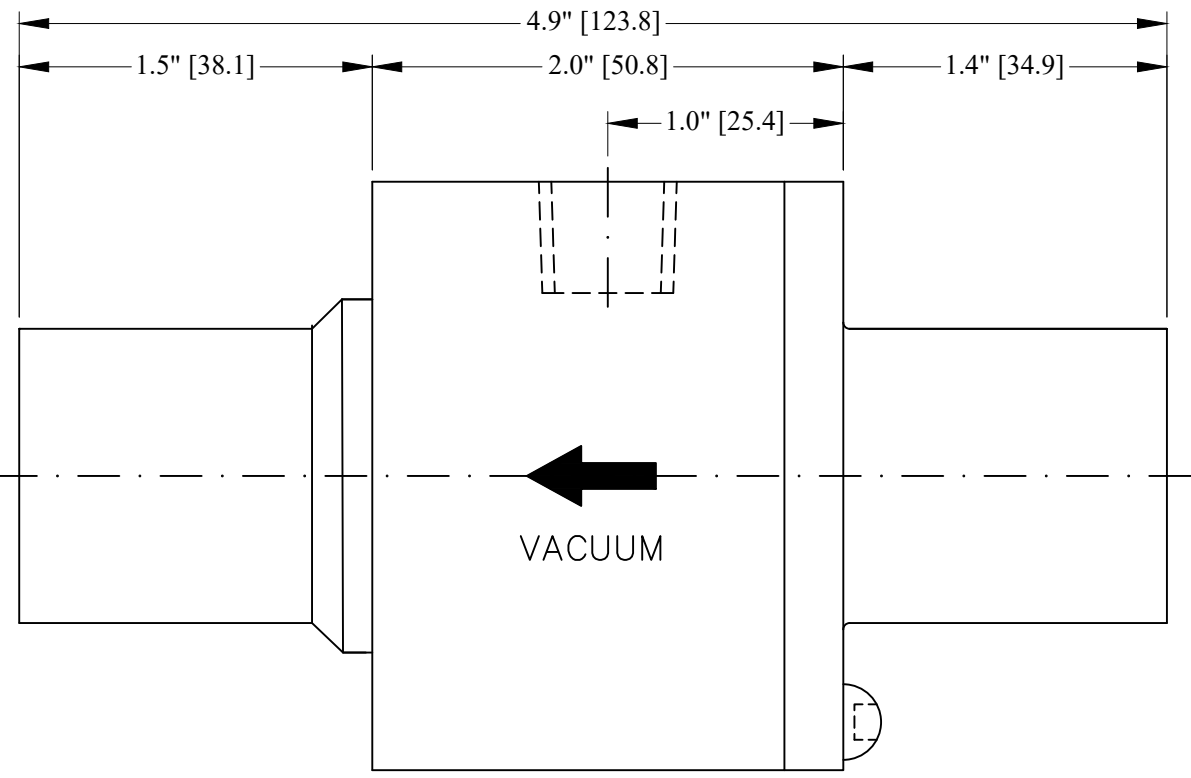
1/4" NPT
AIR INLET

Ø2.5" [Ø63.5]

M6 X 3 HOLES ON
Ø2.0" [Ø50.3]
PCD

Ø1.3" [Ø31.8]

Ø1.0" [Ø25.4]
THRU. THROAT DIAMETER



PROPRIETARY
REPRODUCTION OR DISTRIBUTION
WITHOUT WRITTEN CONSENT OF
NEXFLOW™ IS PROHIBITED.

| | | | | | | | | | |
|------------------------|----------------------------------|---------|--|--------------|--|---------|--|--|--|
| THIRD ANGLE PROJECTION | | | | | | | | | |
| MATERIAL | HIGH TEMPERATURE STAINLESS STEEL | | | | | | | | |
| FINISH | BUFFING | | | | | | | | |
| NEXT ASSEMBLY | | USED ON | | QTY PER ASST | | PART NO | | | |

| | |
|---|--|
| REQUIREMENTS-UNLESS OTHERWISE SPECIFIED | |
| GENERAL | |
| 1. | DIMS ARE IN INCHES (MM) |
| 2. | DIMENSIONING AND TOLERANCING IN ACCORDANCE WITH ANSI Y14.5 (1982) |
| 3. | MACHINE FINISH 125 MICRO INCH RMS |
| 4. | INTERNAL RADI .015" (0.4) |
| 5. | BREAS SHARP CORNERS 0.005" (0.1) TO 0.015" (0.4) |
| LIMITS | |
| 1. | LINEAR DIMS. XXX = .005" (0.1) XX = .010" (0.25) X = .030" (0.75) |
| 2. | ANGLES = ± 1/2° |
| 3. | RUNOUT Ø10 TIR |
| 4. | HOLES IN ACCORDANCE WITH AND 10387 |

| | |
|-----------------|------------|
| CONTRACT NUMBER | - |
| CLIENT | - |
| CONTRACTOR | - |
| DRAWN | CHIRAGS |
| DATE | 25/04/2021 |
| DESIGN | CHENED |
| LES | LES |
| PROJECT | G.A. |
| STRESS | - |
| MANUFACTURING | - |
| THERMAL | - |
| MATERIALS | - |
| MECHANISM | ELECTRICAL |

| | | | |
|--|-----------|----------|--------------|
| NEX FLOW AIR PRODUCTS CORP. 10520 YONGE STREET, UNIT 35B-220, RICHMOND HILL, ON L4C 3C7 TEL: (416) 410-1313 & FAX: (416) 410-1806 www.nex-flow.com | | | |
| TITLE 1-1/4" HIGH TEMPERATURE STAINLESS STEEL RING VAC | | | |
| SIZE | CAGE CODE | DWG NO | RELEASE |
| C | - | 30002HTS | P 1 |
| SCALE | 1:1 | CAD NO | SHEET 1 OF 1 |