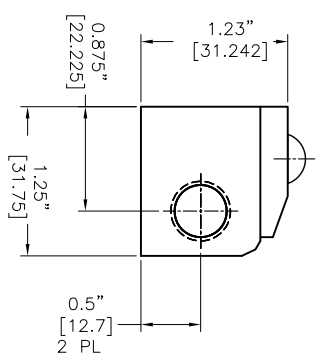
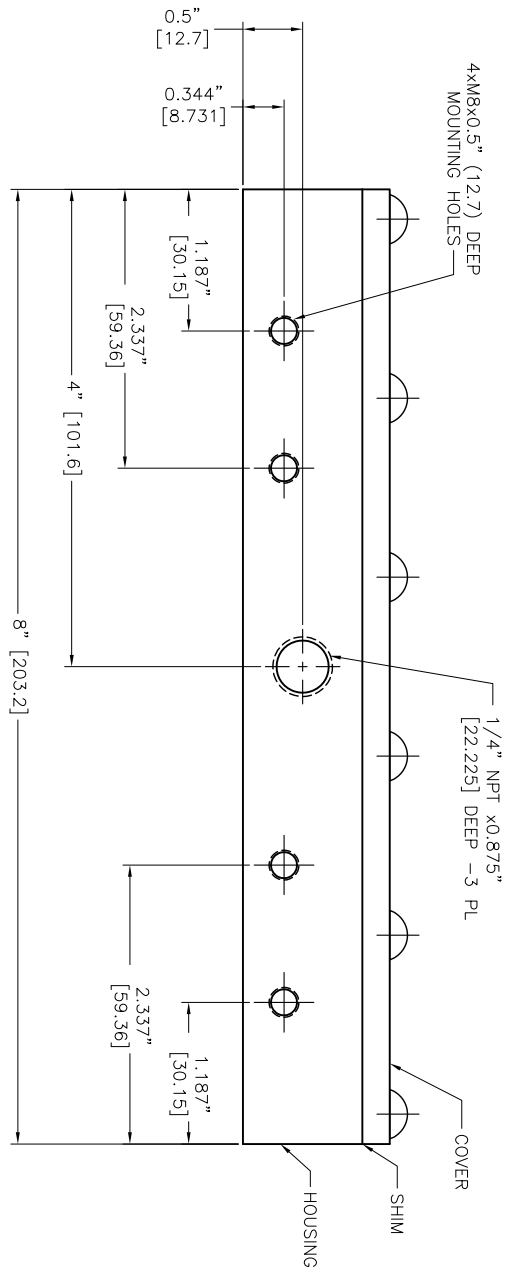
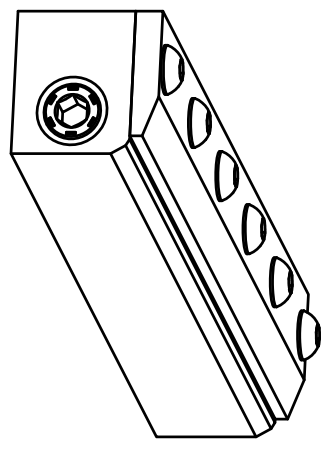
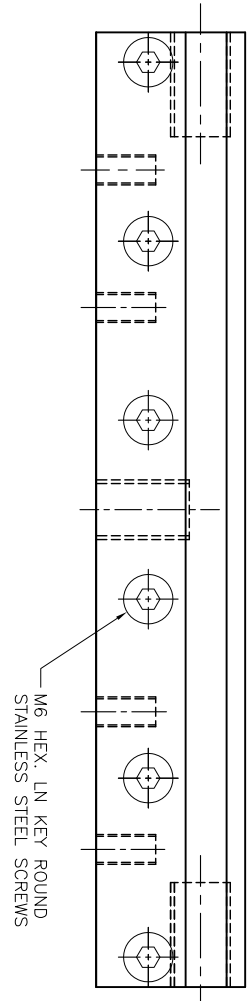


| REVISIONS | | | |
|-----------|-------------|------|----------|
| REV | DESCRIPTION | DATE | APPROVED |
| | | | |

- NOTES:
- 1 ALL DIMENSIONS SHOWN ARE FINISH OPERATIONAL DIMENSIONS WHICH INCLUDE RESIDUAL COATINGS UNLESS OTHERWISE SPECIFIED.
 - 2 PART TO BE PACKED PROPERLY TO AVOID ANY DAMAGE WHILE SHIPPING & HANDLING.
 - 3 ALL HORIZONTAL DIMENSIONS ARE SYMMETRICAL ABOUT VERTICAL CENTER LINE UNLESS OTHERWISE SPECIFIED.



| REQUIREMENTS-UNLESS OTHERWISE SPECIFIED | | CONTRACT NUMBER - | | NEX FLOW AIR PRODUCTS CORP. | |
|---|--|---|------------|-----------------------------|---|
| GENERAL | | CLIENT | CONTRACTOR | DATE | TEL: (416) 410-313 & FAX: (416) 410-1806 www.nex-flow.com |
| 1. DIMS ARE IN INCHES (MM) | | 10520 YONGE STREET, UNIT 386-220, RICHMOND HILL, ON L4C 3C7 | | 03/09/2014 | |
| 2. ACCORDANCE WITH ANSI Y14.5 (1982) | | DESIGN | CHIRIACS | DRAWN | |
| 3. MACHINE FINISH 125 MICRO INCH RMS | | DESIGN | ASHISH | CHECKED | |
| 4. INTERNAL RADI R015 | | DESIGN | LES | PROJECT | |
| 5. BREAK SHARP CORNERS 0.05 TO 015 | | PROJECT | QA | MANUFACTURING | |
| LIMITS | | FINISH | | MATERIALS | |
| 1. LINEAR DIMS. ±0.005 | | STRESSES | | ELECTRICAL | |
| 2. ANGLES ±0.005 | | MECHANICAL | | | |
| 3. HOLE ±0.005 | | | | | |
| 4. HOLES IN ACCORDANCE WITH AND 10387 | | | | | |
| MATERIAL | | ALUMINUM/SS-304 | | SCALE | 1:1 |
| FINISH | | | | CAD NO | SAK-08 |
| | | | | DWG NO | 10008 |
| | | | | REV | P 1 |
| | | | | SHEET | 1 OF 1 |

5 4 3 2 1